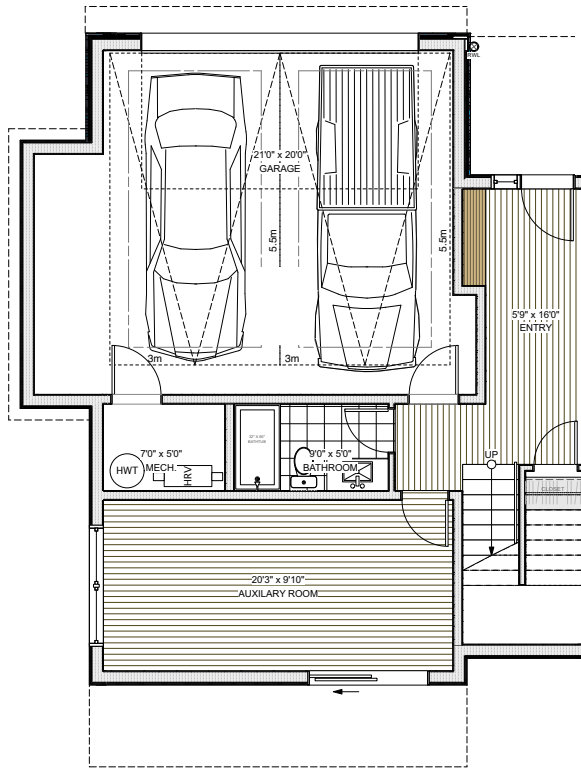
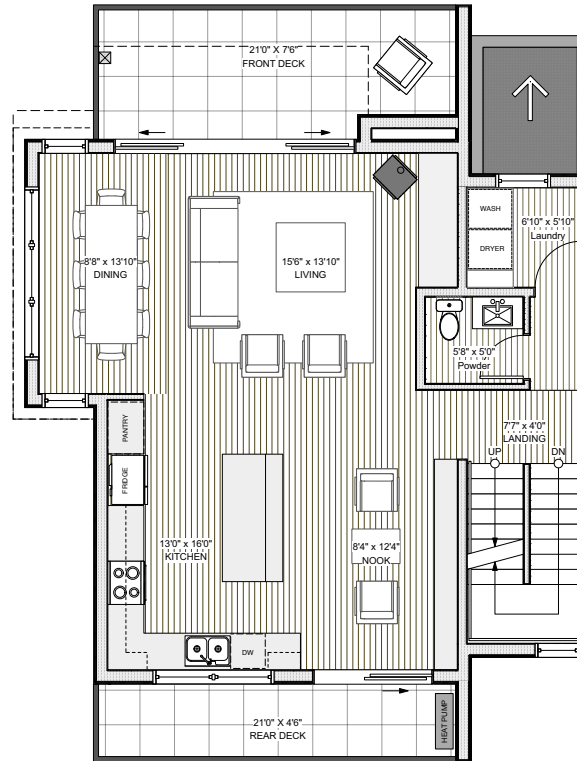


Unit F1

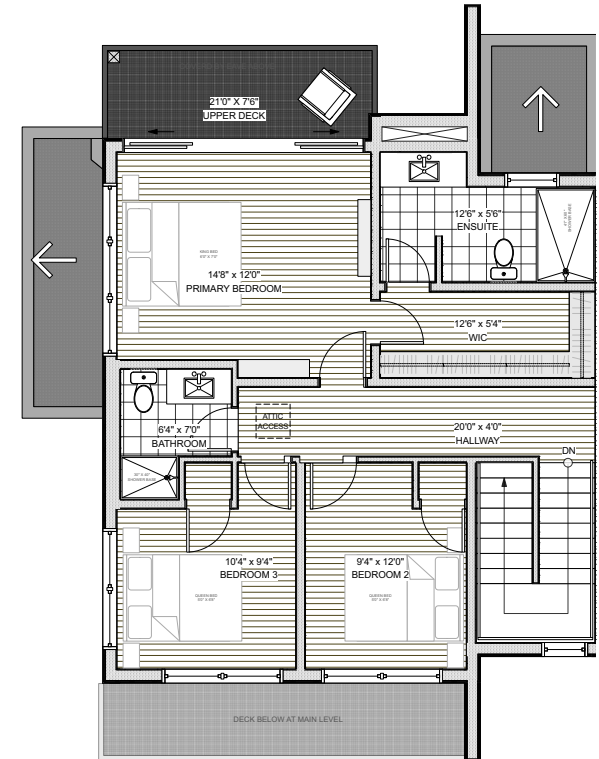
TOTAL SQ FT 2295



LOWER FLOOR PLAN
447 SQ FT



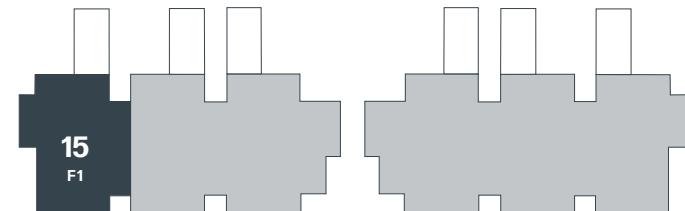
MAIN FLOOR PLAN
957 SQ FT



UPPER FLOOR PLAN
891 SQ FT

BUILDING C

BUILDING D



The developer reserves the right to make changes and modifications to the information contained herein. Maps, views, photography, and renderings are representational only and are not necessarily accurate, and final design, construction and features may differ. Floor plans, areas, layouts, finishes, prices, and availability are subject to change without notice. This is not and should not be construed as an offering for sale, which can only be made pursuant to a disclosure statement filed with the BC Financial Services Authority. For a copy of the disclosure statement, please contact Angell Hasman & Associates Realty at (604) 921-1188. E&O.E.

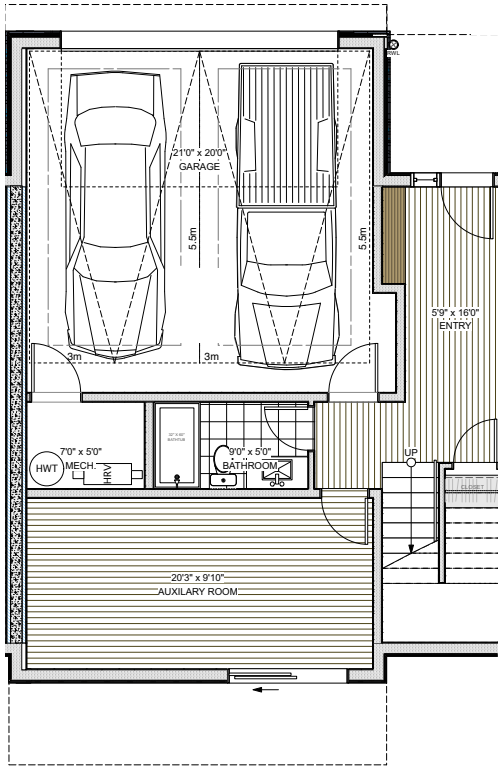
THE
LANDING
WHISTLER

THELANDINGWHISTLER.COM

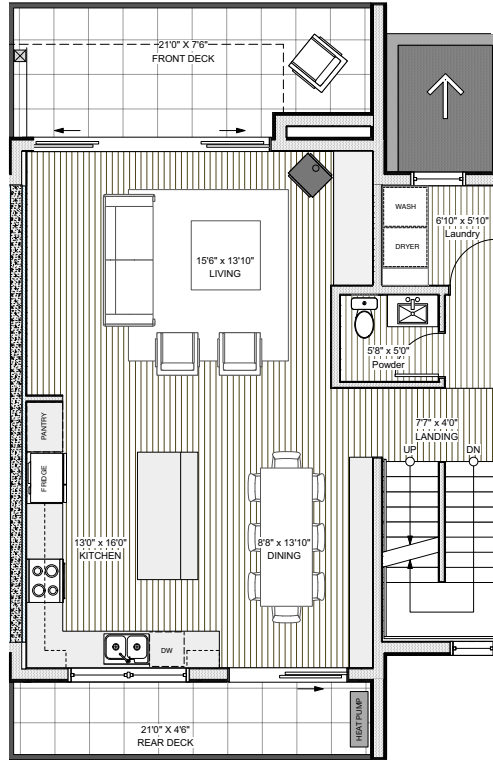
ANGELL HASMAN
ASSOCIATES

Unit E1

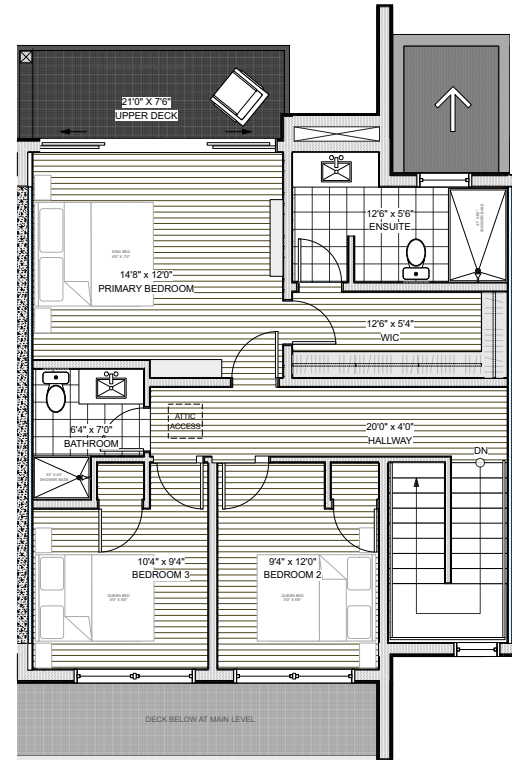
TOTAL SQ FT 2211



LOWER FLOOR PLAN
446 SQ FT



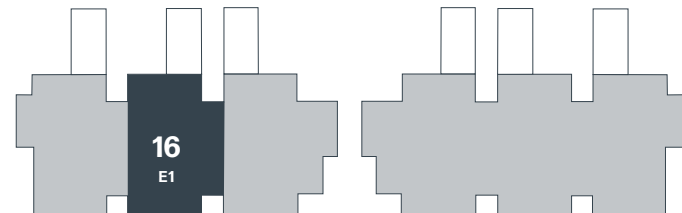
MAIN FLOOR PLAN
883 SQ FT



UPPER FLOOR PLAN
883 SQ FT

BUILDING C

BUILDING D



The developer reserves the right to make changes and modifications to the information contained herein. Maps, views, photography, and renderings are representational only and are not necessarily accurate, and final design, construction and features may differ. Floor plans, areas, layouts, finishes, prices, and availability are subject to change without notice. This is not and should not be construed as an offering for sale, which can only be made pursuant to a disclosure statement filed with the BC Financial Services Authority. For a copy of the disclosure statement, please contact Angell Hasman & Associates Realty at (604) 921-1188. E&O.E.

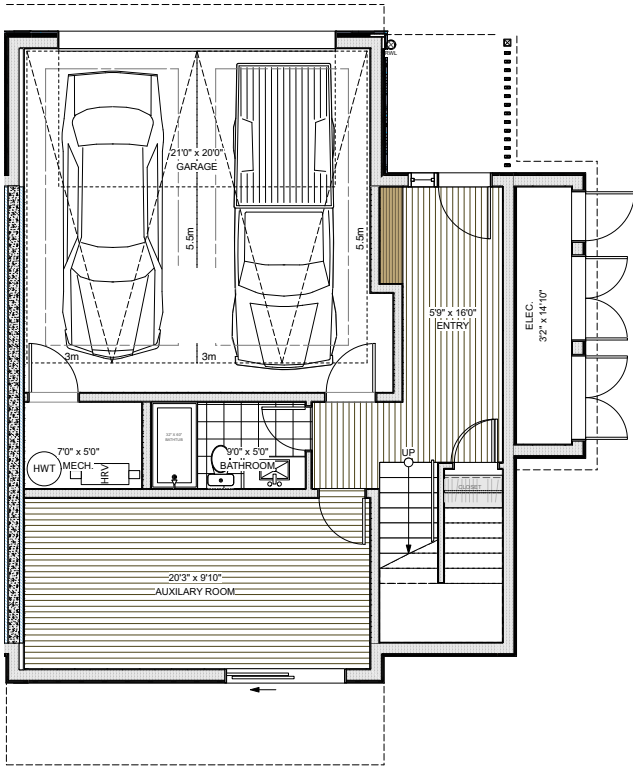
THE
LANDING
WHISTLER

THELANDINGWHISTLER.COM

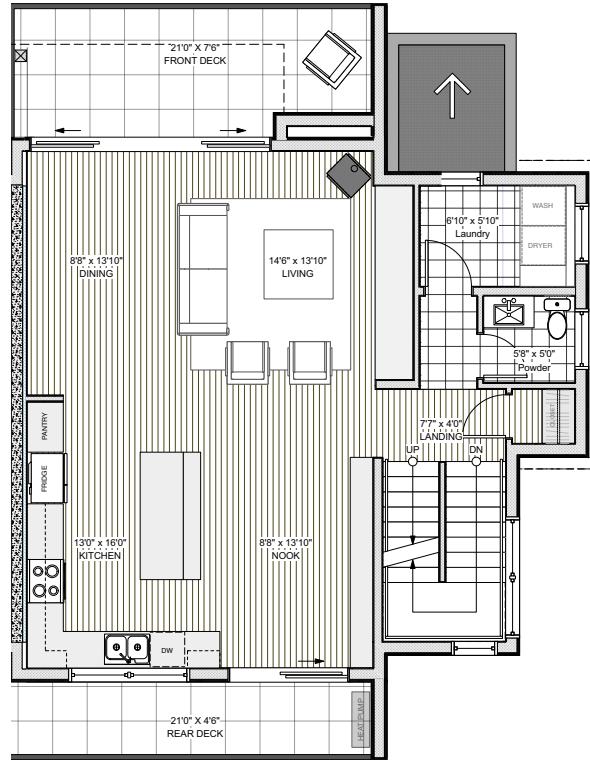
ANGELL HASMAN
ASSOCIATES

Unit D1

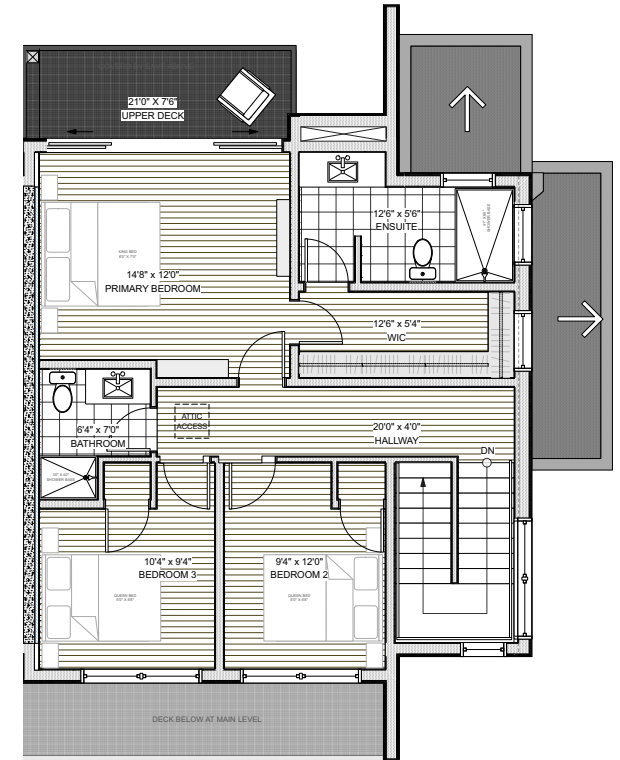
TOTAL SQ FT 2290



LOWER FLOOR PLAN
448 SQ FT



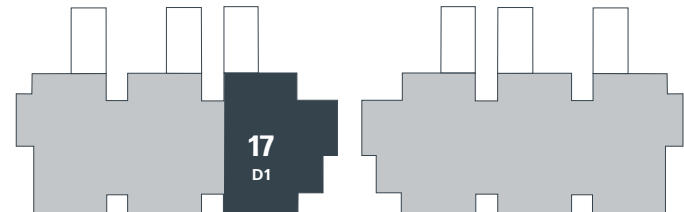
MAIN FLOOR PLAN
952 SQ FT



UPPER FLOOR PLAN
890 SQ FT

BUILDING C

BUILDING D



The developer reserves the right to make changes and modifications to the information contained herein. Maps, views, photography, and renderings are representational only and are not necessarily accurate, and final design, construction and features may differ. Floor plans, areas, layouts, finishes, prices, and availability are subject to change without notice. This is not and should not be construed as an offering for sale, which can only be made pursuant to a disclosure statement filed with the BC Financial Services Authority. For a copy of the disclosure statement, please contact Angell Hasman & Associates Realty at (604) 921-1188. E&O.E.

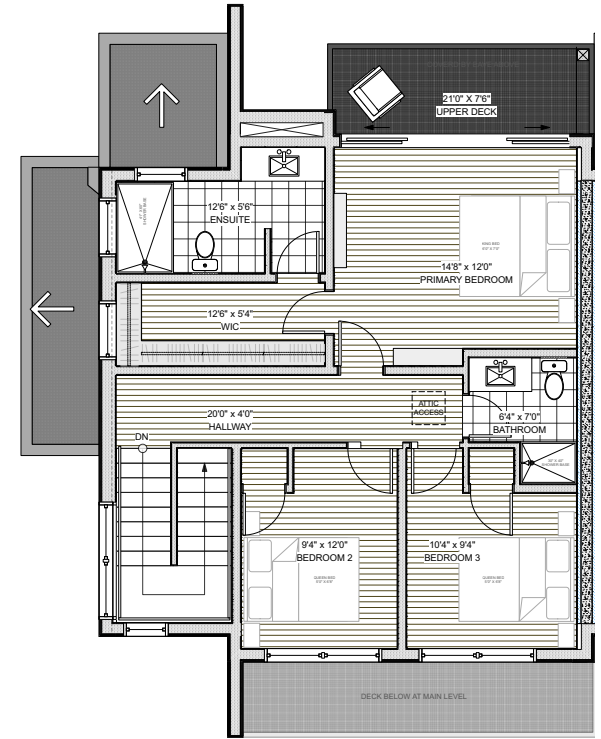
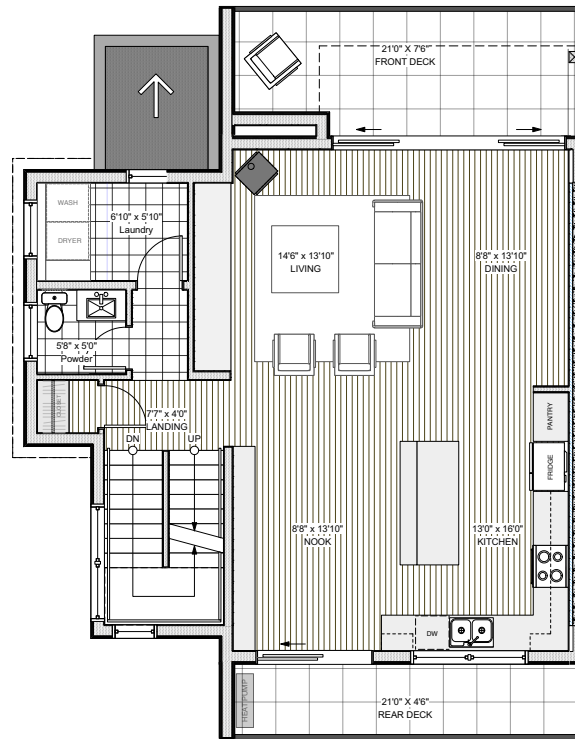
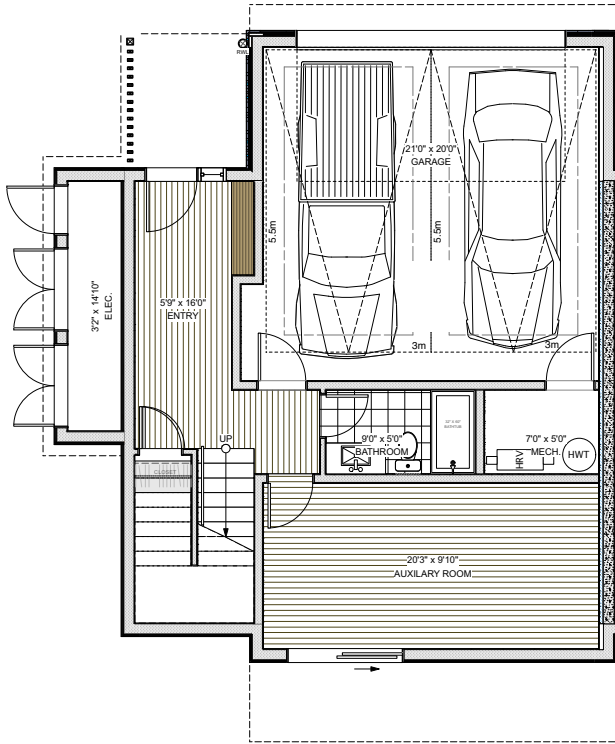
THE
LANDING
WHISTLER

THELANDINGWHISTLER.COM

ANGELL HASMAN
ASSOCIATES

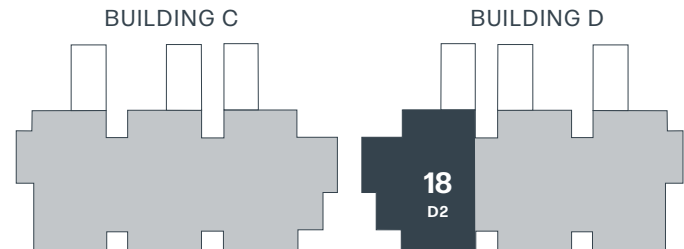
Unit D2

TOTAL SQ FT 2290



THE
LANDING
WHISTLER

The developer reserves the right to make changes and modifications to the information contained herein. Maps, views, photography, and renderings are representational only and are not necessarily accurate, and final design, construction and features may differ. Floor plans, areas, layouts, finishes, prices, and availability are subject to change without notice. This is not and should not be construed as an offering for sale, which can only be made pursuant to a disclosure statement filed with the BC Financial Services Authority. For a copy of the disclosure statement, please contact Angell Hasman & Associates Realty at (604) 921-1188. E&O.E.

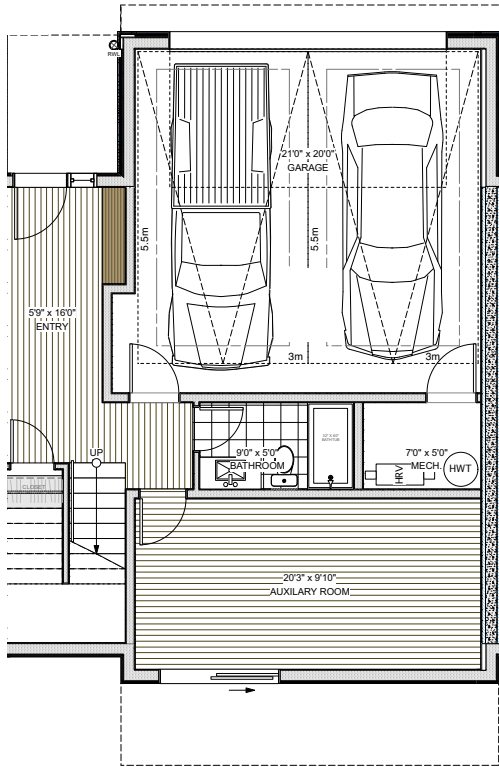


THELANDINGWHISTLER.COM

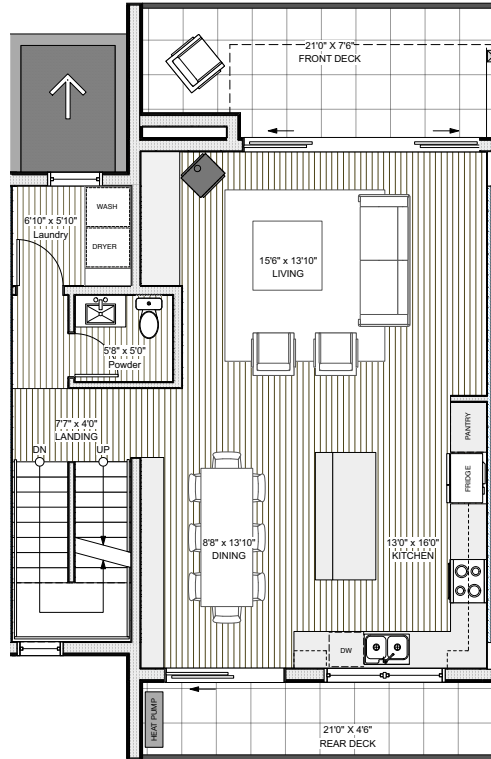
ANGELL HASMAN
ASSOCIATES

Unit E2

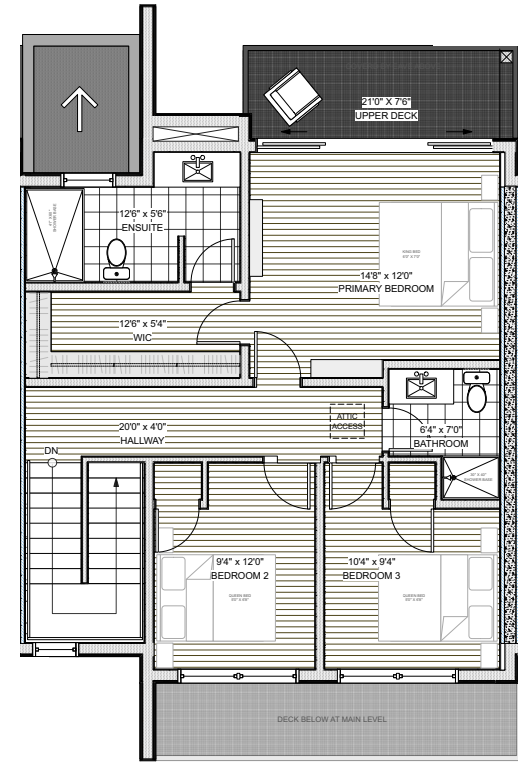
TOTAL SQ FT 2211



LOWER FLOOR PLAN
446 SQ FT



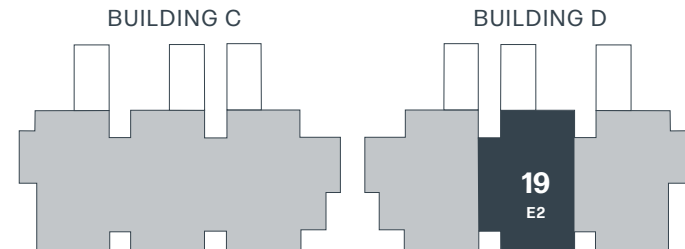
MAIN FLOOR PLAN
883 SQ FT



UPPER FLOOR PLAN
883 SQ FT

THE
LANDING
WHISTLER

The developer reserves the right to make changes and modifications to the information contained herein. Maps, views, photography, and renderings are representational only and are not necessarily accurate, and final design, construction and features may differ. Floor plans, areas, layouts, finishes, prices, and availability are subject to change without notice. This is not and should not be construed as an offering for sale, which can only be made pursuant to a disclosure statement filed with the BC Financial Services Authority. For a copy of the disclosure statement, please contact Angell Hasman & Associates Realty at (604) 921-1188. E&O.E.

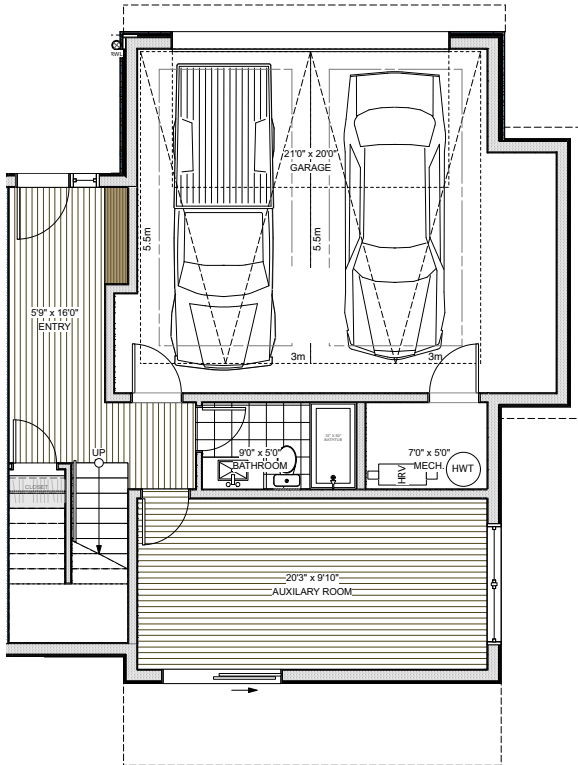


THELANDINGWHISTLER.COM

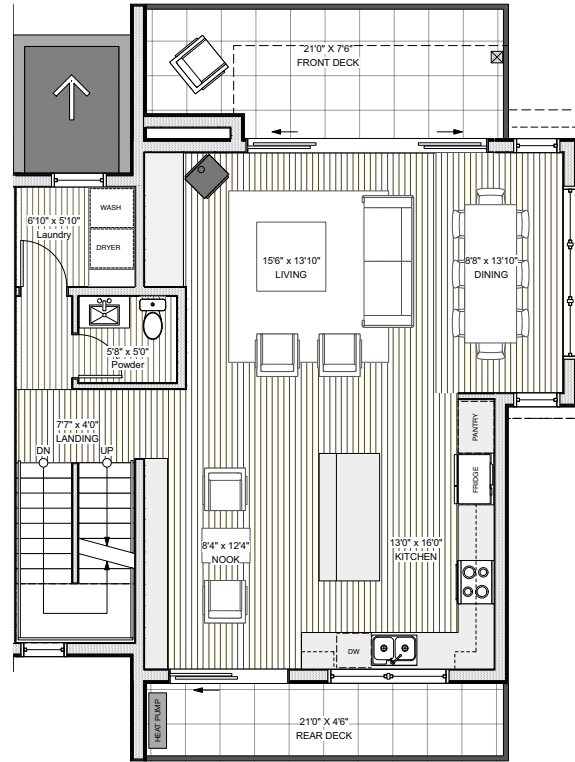
ANGELL HASMAN
ASSOCIATES

Unit F2

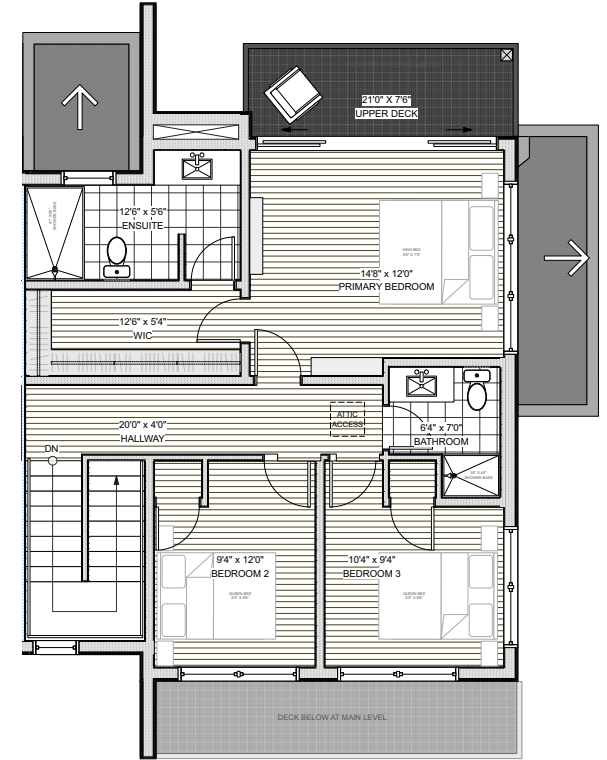
TOTAL SQ FT 2295



LOWER FLOOR PLAN
447 SQ FT



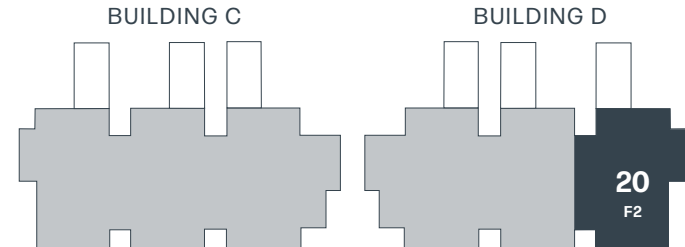
MAIN FLOOR PLAN
957 SQ FT



UPPER FLOOR PLAN
891 SQ FT

THE
LANDING
WHISTLER

The developer reserves the right to make changes and modifications to the information contained herein. Maps, views, photography, and renderings are representational only and are not necessarily accurate, and final design, construction and features may differ. Floor plans, areas, layouts, finishes, prices, and availability are subject to change without notice. This is not and should not be construed as an offering for sale, which can only be made pursuant to a disclosure statement filed with the BC Financial Services Authority. For a copy of the disclosure statement, please contact Angell Hasman & Associates Realty at (604) 921-1188. E&O.E.



THELANDINGWHISTLER.COM

ANGELL HASMAN
ASSOCIATES