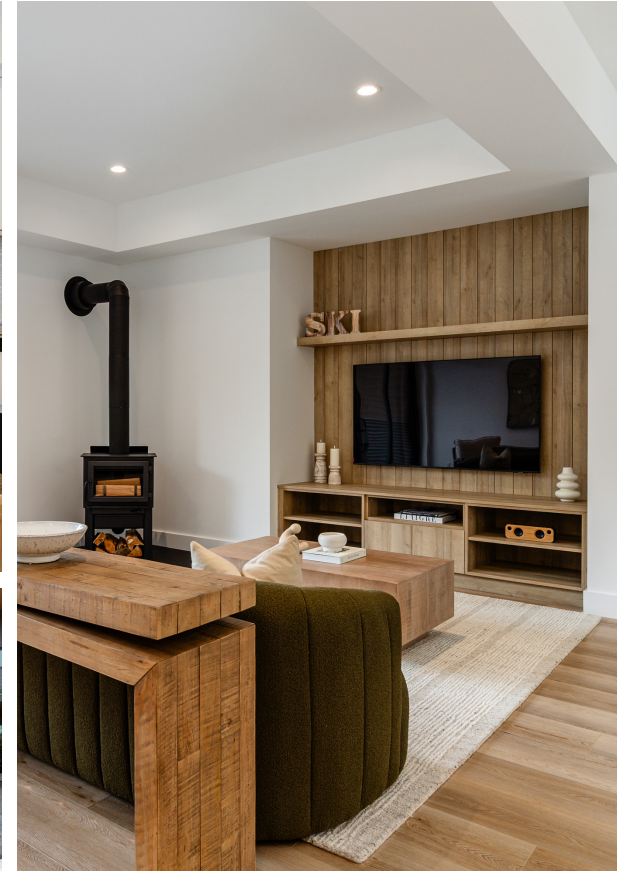


# Interiors & Exteriors



THE  
**LANDING**  
WHISTLER

The developer reserves the right to make changes and modifications to the information contained herein. Maps, views, photography, and renderings are representational only and are not necessarily accurate, and final design, construction and features may differ. Floor plans, areas, layouts, finishes, prices, and availability are subject to change without notice. This is not and should not be construed as an offering for sale, which can only be made pursuant to a disclosure statement filed with the BC Financial Services Authority. For a copy of the disclosure statement, please contact Angell Hasman & Associates Realty at (604) 921-1188. E&O.E.

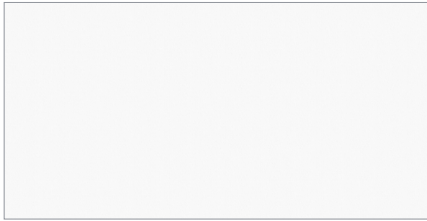
THELANDINGWHISTLER.COM

ANGELL HASMAN  
ASSOCIATES

# Finishes

## Kitchen Cabinets

Uppers - Uniboard 113  
Super White Super Matte



## Kitchen Cabinets

Lowers - Uniboard K14 Mistral  
Riveria Oak



## Kitchen and Bathroom

Counter Tops  
FirStone Quartz - V8003



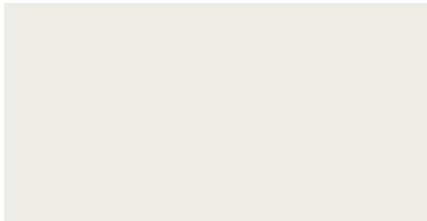
## Vinyl Plank Flooring

Pravada Floors  
Nauticor Collection - Horizon



## Paint Throughout

Sherwin Williams  
SW 7005 PURE WHITE



## Kitchen Backsplash

Maiolica White 3x12



## Kitchen and Bathroom

Cabinet Door & Drawer Pulls  
Matte Black



## Door Hardware

Halifax Square  
Matte Black



# Light Fixtures

## Light Fixtures

Ortech



## Kitchen Island Pendants



## Powder Room Pendants



## Bathroom Wall Light



THE  
LANDING  
WHISTLER

The developer reserves the right to make changes and modifications to the information contained herein. Maps, views, photography, and renderings are representational only and are not necessarily accurate, and final design, construction and features may differ. Floor plans, areas, layouts, finishes, prices, and availability are subject to change without notice. This is not and should not be construed as an offering for sale, which can only be made pursuant to a disclosure statement filed with the BC Financial Services Authority. For a copy of the disclosure statement, please contact Angell Hasman & Associates Realty at (604) 921-1188. E&O.E.

THELANDINGWHISTLER.COM

ANGELL HASMAN  
ASSOCIATES

# Plumbing

## Kitchen Sink

AquaArt Undermount  
Double Bowl - Stainless Steel



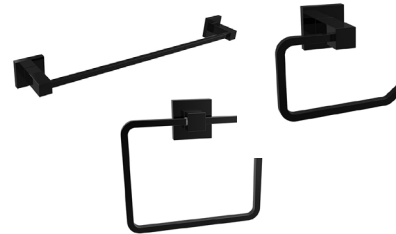
## Kitchen Faucet

Delta Trinsic  
Matte Black



## Bathroom Accessories

Secura - Pegasus  
Matte Black



## Bathrooms & Powder Basin

AquaArt Undermount



## Bathroom Faucet

Delta Lahara Single Lever  
Matte Black



## Dual-flush Toilets

American Standard



## Shower Base

AquaArt - Acrylic base



## Shower Trim Kit

Riobel - Matte Black





# Appliances



**Fisher & Paykel  
Refrigerator**



**Fisher & Paykel  
Slide-in  
Electric Range**



**Fisher & Paykel  
Combi Oven**



**Fisher & Paykel  
Dishwasher**



**Supreme  
Wood Stove**



**Samsung  
24" Washer & Dryer**



**J-225™ Jacuzzi®  
Hot Tub**



**Central Vacuum**



**TOSOT  
Heat Pump**